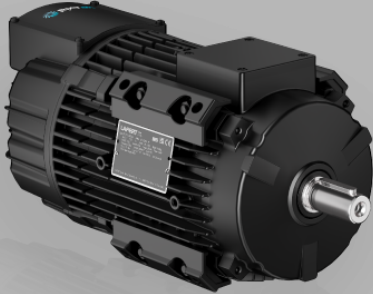


Synchronous PM Motor and Drive Packages - IES2



**PM MOTOR WITH NDE INTEGRATED DRIVE - IES2**

- Maximum integration for axial fans
- PAD mounting to optimize airflow
- Super Premium Efficiency IE5

HP Axial  IES2

## TECHNICAL DATA

Motor Type

HPAX 112 1000 64 3 kW - 1000 rpm | Drive three-phase - 200-240V

## PERFORMANCE DATA

|                           |                  |
|---------------------------|------------------|
| Package Type              | HPAX 112 1000 64 |
| Rated Speed rpm           | 1000             |
| Rated Power kW            | 3                |
| Rated Power HP            | 4                |
| Rated Torque Nm           | 28.6             |
| Peak Torque Nm            | 43               |
| Rated Current Arms        | 6.4              |
| Voltage Constant Vs       | 2.6              |
| Torque Constant Nm/A      | 4.50             |
| Motor Efficiency IE code  | IE5              |
| Motor Efficiency $\eta$ % | 89.3             |
| Drive Efficiency IE code  | IE2              |
| HPI Efficiency IE code    | IES2             |

|                         |      |
|-------------------------|------|
| HPI Efficiency $\eta$ % | 87.3 |
|-------------------------|------|

## Mechanical Data

|                      |                               |
|----------------------|-------------------------------|
| Design               | ALUMINIUM                     |
| Degree of protection | IP 55                         |
| Bearings DE          | 6208 2Z                       |
| Bearings NDE         | 6306 2Z                       |
| Lubrication grease   | low & high temperature grease |
| Regreasing device    | permanent lubrication         |
| Cooling              | IC 411                        |
| Vibration Level      | A (normal)                    |

## Electrical Data

|                       |                |
|-----------------------|----------------|
| Supply Voltage        | 400V - 50Hz    |
| Duty type             | S1             |
| Insulation class      | F              |
| Direction of rotation | bidirectional  |
| Ambient temperature   | -15°C / +40 °C |
| Altitude              | 1000 m.a.s.l.  |

## Drive Data

|                      |                     |
|----------------------|---------------------|
| Supply Voltage       | three-phase         |
| Drive Voltage        | 200-240V            |
| Safety Function      | -                   |
| Drive Torque         | variable            |
| Fieldbus             | CANopen; Modbus RTU |
| Inputs               | 2 Digital; 2 Analog |
| Outputs              | 2 Digital; 2 Analog |
| Degree of Protection | IP 55               |