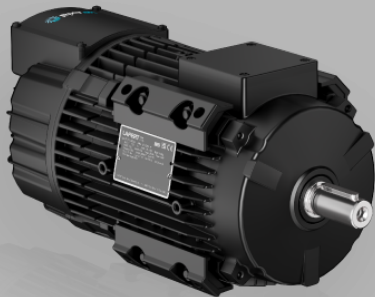


Synchronous PM Motor and Drive Packages - IES2



PM MOTOR WITH NDE INTEGRATED DRIVE - IES2

- Maximum integration for axial fans
- PAD mounting to optimize airflow
- Super Premium Efficiency IE5

HP Axial  **IES2**

TECHNICAL DATA

Motor Type

HPAX 90 1000 32 1.5 kW - 1000 rpm | Drive three-phase - 200-240V

PERFORMANCE DATA

Package Type	HPAX 90 1000 32
Rated Speed rpm	1000
Rated Power kW	1.5
Rated Power HP	2
Rated Torque Nm	14.3
Peak Torque Nm	21.5
Rated Current Arms	3.2
Voltage Constant Vs	2.6
Torque Constant Nm/A	4.50
Motor Efficiency IE code	IE5
Motor Efficiency η %	86.9
Drive Efficiency IE code	IE2
HPI Efficiency IE code	IES2

HPI Efficiency η %	85.8
-------------------------	------

Mechanical Data

Design	ALUMINIUM
Degree of protection	IP 55
Bearings DE	6206 2Z
Bearings NDE	6304 2Z
Lubrication grease	low & high temperature grease
Regreasing device	permanent lubrication
Cooling	IC 411
Vibration Level	A (normal)

Electrical Data

Supply Voltage	400V - 50Hz
Duty type	S1
Insulation class	F
Direction of rotation	bidirectional
Ambient temperature	-15°C / +40 °C
Altitude	1000 m.a.s.l.

Drive Data

Supply Voltage	three-phase
Drive Voltage	200-240V
Safety Function	-
Drive Torque	variable
Fieldbus	CANopen; Modbus RTU
Inputs	2 Digital; 2 Analog
Outputs	2 Digital; 2 Analog
Degree of Protection	IP 55