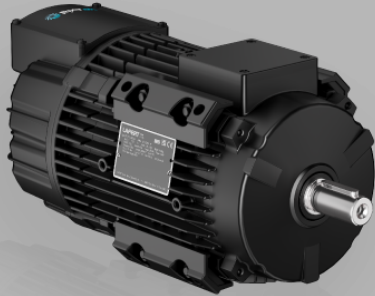


Synchronous PM Motor and Drive Packages - IES2



PM MOTOR WITH NDE INTEGRATED DRIVE - IES2

- Maximum integration for axial fans
- PAD mounting to optimize airflow
- Super Premium Efficiency IE5

HP Axial  **IES2**

TECHNICAL DATA

Motor Type

HPAX 90 1500 23 1.1 kW - 1500 rpm | Drive three-phase - 200-240V

PERFORMANCE DATA

| | |
|---|-----------------|
| Package Type | HPAX 90 1500 23 |
| Rated Speed rpm | 1500 |
| Rated Power kW | 1.1 |
| Rated Power HP | 1.5 |
| Rated Torque Nm | 7 |
| Peak Torque Nm | 10.5 |
| Rated Current Arms | 2.3 |
| Voltage Constant Vs | 1.73 |
| Torque Constant Nm/A | 3.00 |
| Motor Efficiency IE code | IE5 |
| Motor Efficiency η % | 88.1 |
| Drive Efficiency IE code | IE2 |
| HPI Efficiency IE code | IES2 |

| | |
|-------------------------|------|
| HPI Efficiency η % | 86.7 |
|-------------------------|------|

Mechanical Data

| | |
|----------------------|-------------------------------|
| Design | ALUMINIUM |
| Degree of protection | IP 55 |
| Bearings DE | 6206 2Z |
| Bearings NDE | 6304 2Z |
| Lubrication grease | low & high temperature grease |
| Regreasing device | permanent lubrication |
| Cooling | IC 411 |
| Vibration Level | A (normal) |

Electrical Data

| | |
|-----------------------|----------------|
| Supply Voltage | 400V - 50Hz |
| Duty type | S1 |
| Insulation class | F |
| Direction of rotation | bidirectional |
| Ambient temperature | -15°C / +40 °C |
| Altitude | 1000 m.a.s.l. |

Drive Data

| | |
|----------------------|---------------------|
| Supply Voltage | three-phase |
| Drive Voltage | 200-240V |
| Safety Function | - |
| Drive Torque | variable |
| Fieldbus | CANopen; Modbus RTU |
| Inputs | 2 Digital; 2 Analog |
| Outputs | 2 Digital; 2 Analog |
| Degree of Protection | IP 55 |