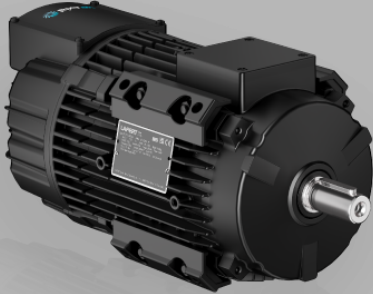


**Synchronous PM Motor and Drive Packages - IES2**



**PM MOTOR WITH NDE INTEGRATED DRIVE - IES2**

- Maximum integration for axial fans
- PAD mounting to optimize airflow
- Super Premium Efficiency IE5

**HP Axial**  **IES2**

**TECHNICAL DATA**

**Motor Type**

HPAX 90 3000 22 1.1 kW - 3000 rpm | Drive three-phase - 200-240V

**PERFORMANCE DATA**

<b>Package Type</b>	HPAX 90 3000 22
<b>Rated Speed rpm</b>	3000
<b>Rated Power kW</b>	1.1
<b>Rated Power HP</b>	1.5
<b>Rated Torque Nm</b>	3.5
<b>Peak Torque Nm</b>	5.3
<b>Rated Current Arms</b>	2.3
<b>Voltage Constant Vs</b>	0.9
<b>Torque Constant Nm/A</b>	1.56
<b>Motor Efficiency IE code</b>	IE5
<b>Motor Efficiency <math>\eta</math> %</b>	86.2
<b>Drive Efficiency IE code</b>	IE2
<b>HPI Efficiency IE code</b>	IES2

HPI Efficiency $\eta$ %	84.9
-------------------------	------

## Mechanical Data

Design	ALUMINIUM
Degree of protection	IP 55
Bearings DE	6206 2Z
Bearings NDE	6304 2Z
Lubrication grease	low & high temperature grease
Regreasing device	permanent lubrication
Cooling	IC 411
Vibration Level	A (normal)

## Electrical Data

Supply Voltage	400V - 50Hz
Duty type	S1
Insulation class	F
Direction of rotation	bidirectional
Ambient temperature	-15°C / +40 °C
Altitude	1000 m.a.s.l.

## Drive Data

Supply Voltage	three-phase
Drive Voltage	200-240V
Safety Function	-
Drive Torque	variable
Fieldbus	CANopen; Modbus RTU
Inputs	2 Digital; 2 Analog
Outputs	2 Digital; 2 Analog
Degree of Protection	IP 55