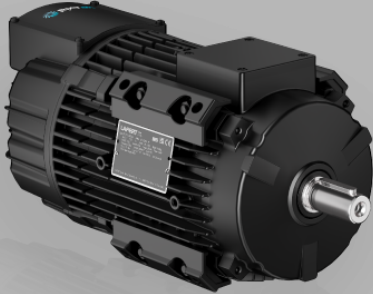


Synchronous PM Motor and Drive Packages - IES2



**PM MOTOR WITH NDE INTEGRATED DRIVE - IES2**

- Maximum integration for axial fans
- PAD mounting to optimize airflow
- Super Premium Efficiency IE5

HP Axial  IES2

## TECHNICAL DATA

Motor Type

HPAX 90 750 16 0.75 kW - 750 rpm | Drive three-phase - 380-480V

## PERFORMANCE DATA

Package Type	HPAX 90 750 16
Rated Speed rpm	750
Rated Power kW	0.75
Rated Power HP	1
Rated Torque Nm	9.5
Peak Torque Nm	14.3
Rated Current Arms	1.6
Voltage Constant Vs	3.46
Torque Constant Nm/A	5.99
Motor Efficiency IE code	IE5
Motor Efficiency $\eta$ %	79.8
Drive Efficiency IE code	IE2
HPI Efficiency IE code	IES2

HPI Efficiency $\eta$ %	78.3
-------------------------	------

## Mechanical Data

Design	ALUMINIUM
Degree of protection	IP 55
Bearings DE	6206 2Z
Bearings NDE	6304 2Z
Lubrication grease	low & high temperature grease
Regreasing device	permanent lubrication
Cooling	IC 411
Vibration Level	A (normal)

## Electrical Data

Supply Voltage	400V - 50Hz
Duty type	S1
Insulation class	F
Direction of rotation	bidirectional
Ambient temperature	-15°C / +40 °C
Altitude	1000 m.a.s.l.

## Drive Data

Supply Voltage	three-phase
Drive Voltage	380-480V
Safety Function	-
Drive Torque	variable
Fieldbus	CANopen; Modbus RTU
Inputs	2 Digital; 2 Analog
Outputs	2 Digital; 2 Analog
Degree of Protection	IP 55