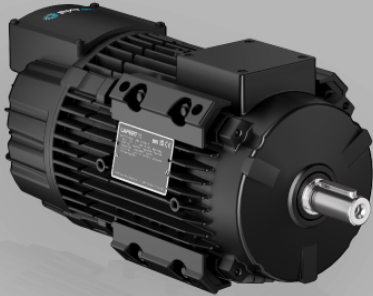


## Synchronous PM Motor and Drive Packages - IES2



### PM MOTOR WITH NDE INTEGRATED DRIVE - IES2

- Maximum integration for axial fans
- PAD mounting to optimize airflow
- Super Premium Efficiency IE5

HP Axial  IES2

## TECHNICAL DATA

### Motor Type

HPAX 112 3000 45 2.2 kW - 3000 rpm | Drive three-phase - 380-480V

## PERFORMANCE DATA

Package Type	HPAX 112 3000 45
Rated Speed rpm	3000
Rated Power kW	2.2
Rated Power HP	3
Rated Torque Nm	7
Peak Torque Nm	10.5
Rated Current Arms	4.7
Voltage Constant Vs	0.9
Torque Constant Nm/A	1.56
Motor Efficiency IE code	IE5
Motor Efficiency $\eta$ %	88.9
Drive Efficiency IE code	IE2
HPI Efficiency IE code	IES2

HPI Efficiency $\eta$ %	86.6
-------------------------	------

## Mechanical Data

Design	ALUMINIUM
Degree of protection	IP 55
Bearings DE	6208 2Z
Bearings NDE	6306 2Z
Lubrication grease	low & high temperature grease
Regreasing device	permanent lubrication
Cooling	IC 411
Vibration Level	A (normal)

## Electrical Data

Supply Voltage	400V - 50Hz
Duty type	S1
Insulation class	F
Direction of rotation	bidirectional
Ambient temperature	-15°C / +40 °C
Altitude	1000 m.a.s.l.

## Drive Data

Supply Voltage	three-phase
Drive Voltage	380-480V
Safety Function	-
Drive Torque	variable
Fieldbus	CANopen; Modbus RTU
Inputs	2 Digital; 2 Analog
Outputs	2 Digital; 2 Analog
Degree of Protection	IP 55